

Service description

Product: SP200	Service description no: 3112-S002	Ver: 1
-------------------	---	-----------

Symptom

Adjusting the distance between the impeller and cutter.

Caused by

Incorrect distance in the pump housing.

Solution

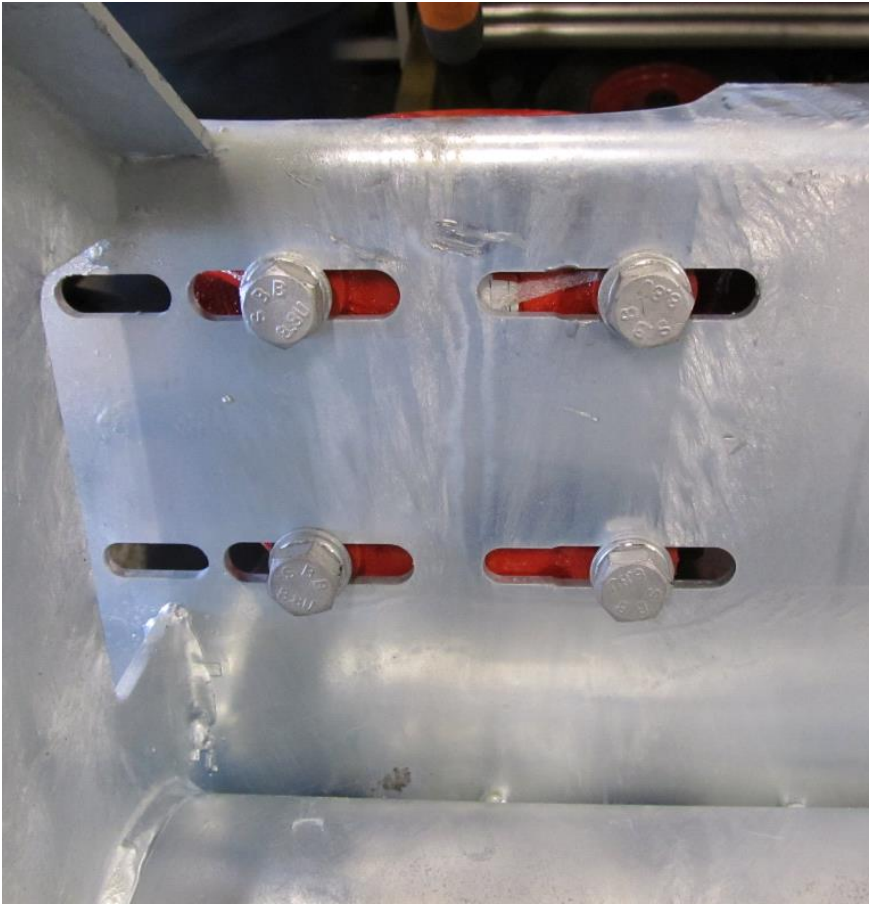
Adjust the distance between the impeller and the cutter.



In order to maintain good cutting productivity, distance between the impeller and the cutter should be 2-3 mm. The distance is checked at least once per season or after 40 hours. If the distance is too small, an impact may occur, causing vibration. Too large distance will cause loss of power.

The distance is adjusted as follows:

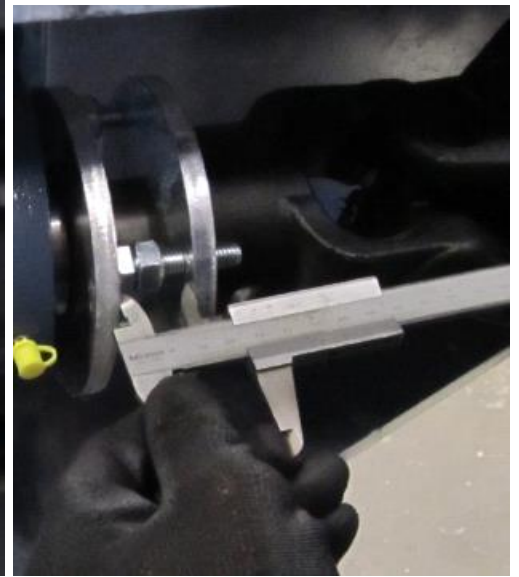
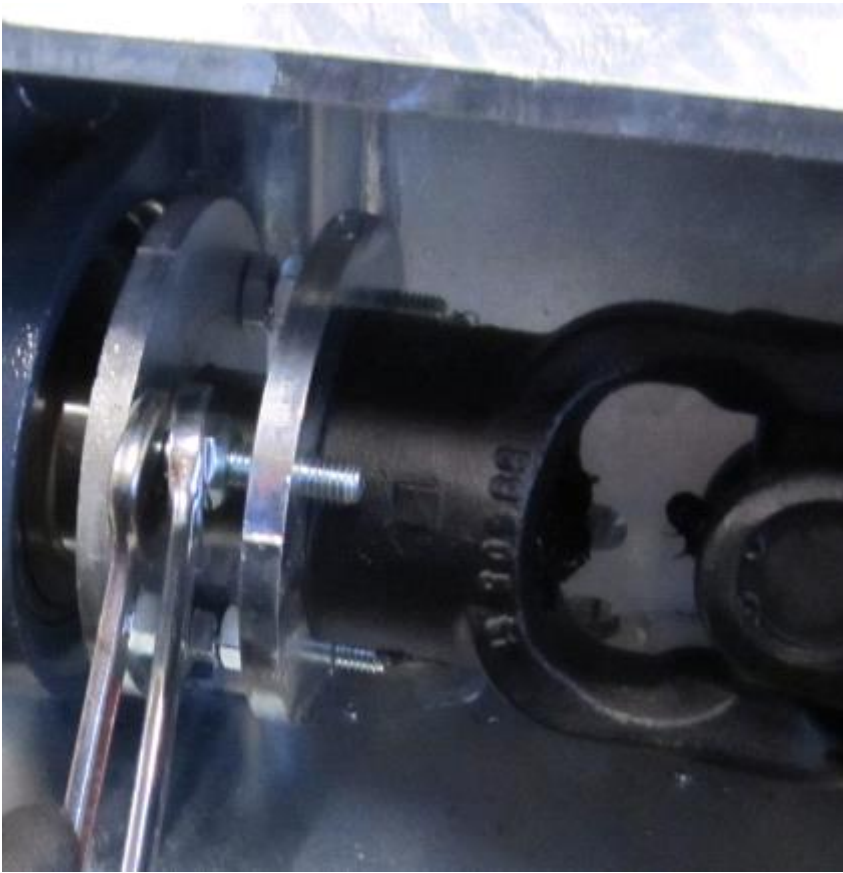
1. Loosen up the screws such as the gearbox.



2. Loosen up the set screw on the bearing.



3. Adjust the distance in the pump housing by adjusting the distance washers between the bearing and the universal joint. By reducing the distance between washers, the universal joint will be moved down towards the bearing and the distance between the impeller and the cutter will decrease. It is important to check if the distance between three adjustment screws is the same.



4. Move the gearbox to the rear that the ratio of the gearbox to the universal joint is the same as before. Tighten screws securing the gearbox.